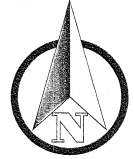
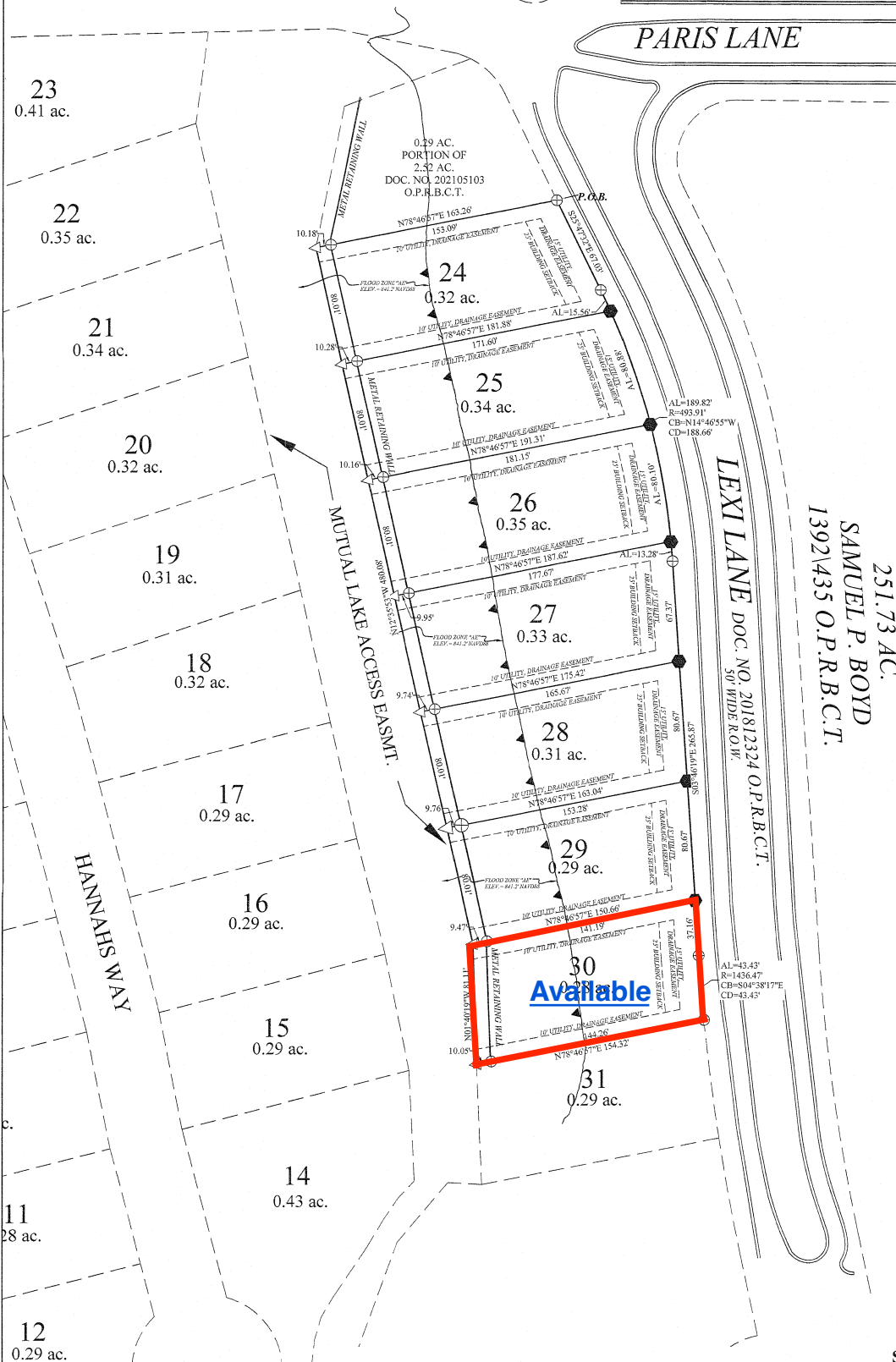


TO SAM BOYD

# The Ranch on Lake LBJ



0 50' 100'  
SCALE 1" = 50'



**TYPICAL BUILDING SETBACK:**

- 25' BUILDING SETBACK ALONG FRONT STREET LINES
- 15' BUILDING SETBACK ALONG SIDE STREET LINES
- 10' BUILDING SETBACK ALONG SIDE LOT LINES

**TYPICAL UTILITY AND DRAINAGE EASEMENTS:**

- 15' ALONG ALL STREET LINES
- 10' ALONG ALL SIDE LOT LINES  
(NOT INCLUDING LAKEFRONT LINES)

**SET NOTE:**

ALL 60-D NAILS ARE PRE UTILITY CONSTRUCTION AND WILL BE REPLACE AFTER UTILITY CONSTRUCTION WITH 1/2" REBAR WITH CAP STAMPED "WILLIS" AND/OR MAG NAIL WITH WASHER STAMPED "WILLIS"

LEGEND	
	1/2" REBAR FOUND WITH CAP STAMPED "WILLIS"
	RECORD POINT
	60-D NAIL (SEE 60-D NOTE)

251.73 AC.  
SAMUEL P. BOYD  
1392\435 O.P.R.B.C.T.

**FINAL PLAT OF**

**THE RANCH ON LAKE LBJ  
PHASE ONE, PLAT NO. 1.11  
2.23 ACRES  
OUT OF THE  
W.B. WAINSCOTT  
SURVEY NO. 29, ABSTRACT NO. 949  
A PRIVATE SUBDIVISION  
BURNET COUNTY, TEXAS**

SHEET 2 OF 2

OFFICE: C. FLORES  
FIELD: T. MARTINKA

JOB #: 15938

Willis - Sherman Associates, Inc.  
LAND SURVEYORS AND PLANNERS  
310 MAIN • MARBLE FALLS, TEXAS • 78654  
(830) 693-3566 FAX (830) 693-5362  
FIRM NUMBER: 10027600



1527